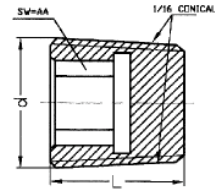


Ordering of the cylindrical plugs
please add - D - at the end of the order no

Für zylindrische Verschlussstopfen
schreiben Sie bitte ein - D - dazu



BSPT Pressure Plugs (1/16" Conical thread) - Verschlussstopfen mit BSPT - Gewinde (1/16" konisch)

Material :MS58 (Brass) - Messing (DIN 906)

Material :Steel - Stahl (DIN 906)

Material :Stainless steel (AISI 316L)-Edelstahl (DIN 906)

Order No Bestell Nr.	d	L	SW
TKTR 10	BSPT 1/8"	8	5
TKTR 13	BSPT 1/4"	10	7
TKTR 17	BSPT 3/8"	10	8
TKTR 21	BSPT 1/2"	10	10
TKTR 26	BSPT 3/4"	12	12
TKTR 33	BSPT 1"	19	17
TKTR 42	BSPT 1 1/4"	22	22
TKTR 48	BSPT 1 1/2"	22	24

Order No Bestell Nr.	d	L	SW
TKTR 10.C	BSPT 1/8"	8	5
TKTR 13.C	BSPT 1/4"	10	6
TKTR 17.C	BSPT 3/8"	11	8
TKTR 21.C	BSPT 1/2"	13	10
TKTR 26.C	BSPT 3/4"	17	12
TKTR 33.C	BSPT 1"	19	17
TKTR 42.C	BSPT 1 1/4"	22	22
TKTR 48.C	BSPT 1 1/2"	22	24

Order No Bestell Nr.	d	L	SW
TKTR 10.S	BSPT 1/8"	8	5
TKTR 13.S	BSPT 1/4"	10	6
TKTR 17.S	BSPT 3/8"	11	8
TKTR 21.S	BSPT 1/2"	13	10
TKTR 26.S	BSPT 3/4"	17	12
TKTR 33.S	BSPT 1"	19	17
TKTR 42.S	BSPT 1 1/4"	22	22
TKTR 48.S	BSPT 1 1/2"	22	24

NPT Pressure Plugs (1/16" Conical thread)

Material :MS58 (Brass) - Messing (DIN 906)

Material :Steel - Stahl (DIN 906)

Material :Stainless steel (AISI 316L)-Edelstahl (DIN 906)

Order No Bestell Nr.	d	L	SW
TKTN 10	NPT 1/8"	8	5
TKTN 13	NPT 1/4"	10	6
TKTN 17	NPT 3/8"	11	8
TKTN 21	NPT 1/2"	13	10
TKTN 26	NPT 3/4"	17	12
TKTN 33	NPT 1"	19	17
TKTN 42	NPT 1 1/4"	22	22
TKTN 48	NPT 1 1/2"	22	24

Order No Bestell Nr.	d	L	SW
TKTN 10.C	NPT 1/8"	8	5
TKTN 13.C	NPT 1/4"	10	6
TKTN 17.C	NPT 3/8"	11	8
TKTN 21.C	NPT 1/2"	13	10
TKTN 26.C	NPT 3/4"	17	12
TKTN 33.C	NPT 1"	19	17
TKTN 42.C	NPT 1 1/4"	22	22
TKTN 48.C	NPT 1 1/2"	22	24

Order No Bestell Nr.	d	L	SW
TKTN 10.S	NPT 1/8"	8	5
TKTN 13.S	NPT 1/4"	10	6
TKTN 17.S	NPT 3/8"	11	8
TKTN 21.S	NPT 1/2"	13	10
TKTN 26.S	NPT 3/4"	17	12
TKTN 33.S	NPT 1"	19	17
TKTN 42.S	NPT 1 1/4"	22	22
TKTN 48.S	NPT 1 1/2"	22	24

Metric Pressure Plugs (1/16" Conical thread)

Material :MS58 (Brass) - Messing (DIN 906)

Material :Steel - Stahl (DIN 906)

Material :Stainless steel (AISI 316L)-Edelstahl (DIN 906)

Order No Bestell Nr.	d	L	SW
TKTM 8	M8x0,75	8	4
TKTM 10	M10x1	8	5
TKTM 12	M12x1.5	10	6
TKTM 14	M14x1.5	10	7
TKTM 16	M16x1.5	10	8
TKTM 24	M24x1.5	10	12

Order No Bestell Nr.	d	L	SW
TKTM 8.C	M8x0,75	8	4
TKTM 10.C	M10x1	8	5
TKTM 12.C	M12x1.5	10	6
TKTM 14.C	M14x1.5	10	7
TKTM 16.C	M16x1.5	10	8
TKTM 24.C	M24x1.5	10	12

Order No Bestell Nr.	d	L	SW
TKTM 8.S	M8x0,75	8	4
TKTM 10.S	M10x1	8	5
TKTM 12.S	M12x1.5	10	6
TKTM 14.S	M14x1.5	10	7
TKTM 16.S	M16x1.5	10	8
TKTM 24.S	M24x1.5	10	12

